

LENTEN VESPERS



MARCH 12, 2024

+ Lenten Vespers +

March 12, 2025

7 PM

Bethel Lutheran Church

SERVICE OF LIGHT

Holden Evening Prayer page 2

EVENING HYMN

page 3

EVENING THANKSGIVING

page 4

Leader: Blessed are you..... Life of all creation.

PSALMODY

Psalm 141

page 4

Leader: May our prayers.....

page 8

HYMN OF THE DAY # 459

Wade in the Water

Stand.

WADE IN THE WATER

In the imagery of the African-American spiritual tradition, bodies of water have powerful symbolism, and draw apt connections with similar Biblical imagery. The Red Sea, the Pool at Siloam, the waters of the Jordan—these represent both barriers and avenues to new life in a Promised Land. They find a parallel in the rich symbolism of “Deep River” and that “homeland over Jordan”—metaphors not only for metaphysical boundaries, but for physical boundaries like the Ohio River, as well. Likewise, this imagery calls Christians to rise again, by God’s grace, to new life in the waters of Baptism.

FIRST READING

Job 1

MEDITATION

Were You There?
WERE YOU THERE / BALM IN GILEAD
Arranged by Brant Adams [2007]

Dr. Gary Lessmann, clarinet

This setting of the moving spiritual combines the striving melody with that of another spiritual, the plaintive *There is a Balm in Gilead*.

SECOND READING

Luke 21:34—22:6

HOMILY

Pastor Scott Benolkin

THE ANNUNCIATION

page 8

Luke 1:26—28

Leader: An angel went from God.....I live to do your will

THE MAGNIFICAT

page 8

LITANY AND PRAYERS

page 10

FINAL BLESSING

page 12

CLOSING HYMN

I Want Jesus to Walk with Me
SOJOURNER

ELW # 325

THE PEACE

*Have Something for the Bethel Connection, Bulletin, Website, Narthex Information Board, or Facebook?
Email it to submissions@bethelstl.org by 9 a.m. Monday morning.*

SERVING TODAY

Preacher	Pastor Scott Benolkin
Leader	Silas Johnson
Assisting	Jessica White
Musicians	Dr. Gary Lessmann, clarinet Andrea Lair, mezzo soprano Dr. Stephen Mager, organist and choir director
Audio-Visual Engineers	Brittany Upchurch Nathan Schroeder



7001 Forsyth Boulevard, Saint Louis, MO 63105

Office Hours Mon–Fri 10 AM–2 PM

Office: (314) 863–3112

Pastoral Emergencies: (614) 446–9693

LuMin Pastor: (314) 636–3202

The Rev. Scott K. Benolkin (he/him), Pastor, pastor.scott@bethelstl.org

Stephen Mager, DM, Organist and Music Director

The Rev. Tina Reyes (she/her/ella), Campus Pastor, LuMin St. Louis, pastor.luminstl@gmail.com

Anna Burkemper, Church Administrator, office@bethelstl.org

Have a prayer request? Email it to prayers@bethelstl.org anytime.

Note that the information you send to this address will get shared with a number of people who will be praying for you as well as the Sunday Holy Communion bulletin.

Cover art: Job Rebuked By His Friends by William Blake, oil painting

Acknowledgments: Service liturgy and music reprinted from *Evangelical Lutheran Worship (ELW)*, Copyright © 2006 Augsburg Fortress, and from *Sundays and Seasons*, Copyright © 2025 Augsburg Fortress. All rights reserved. Reprinted by permission under Augsburg Fortress Liturgies Annual License #37725.

Wade in the Water

Refrain

All



Wade in the wa - ter, wade in the wa - ter, chil - dren,



wade in the wa - ter, God's a - goin' - a trou - ble the wa - ter.

Leader

All



- 1 See that host all dressed in white,
- 2 See that band all dressed in red, God's a - goin' - a trou - ble the
- 3 Look o - ver yon - der, what do I see?
- 4 If you don't be - lieve I've been re - deemed,

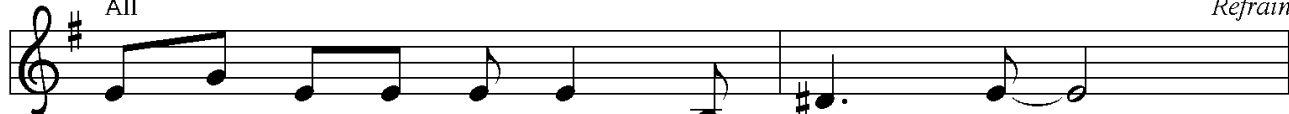
Leader



wa - ter. the lead - er looks like the Is - rael - ite.
 looks like the band that . . . Mo - ses led.
 the Ho - ly Ghost a - com - ing on me.
 just fol - low me down to . . . Jor - dan's stream.

All

Refrain



God's a - goin' - a trou - ble the wa - ter.

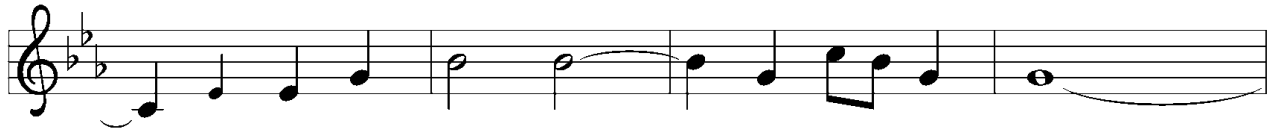
Text: African American spiritual

Music: WADE IN THE WATER, African American spiritual

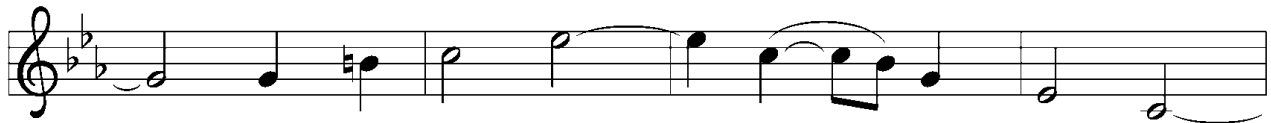
I Want Jesus to Walk with Me



1 I want Je - sus to walk with me;
2 In my tri - als, Lord, walk with me;
3 When I'm in trou - ble, Lord, walk with me;



I want Je - sus to walk with me;
in my tri - als, Lord, walk with me;
when I'm in trou - ble, Lord, walk with me;



all a - long my pil - grim jour - ney,
when my heart is al - most break - ing,
when my head is bowed in sor - row,



Lord, I want Je - sus to walk with me.
Lord, I want Je - sus to walk with me.
Lord, I want Je - sus to walk with me.

Text: African American spiritual
Music: SOJOURNER, African American spiritual