

CHRISTMAS EVE



Lessons and Carols

December 24, 2024

5 PM

WELCOME, GUESTS

Welcome to all who worship with us today. We are thankful for your presence and invite you to share in “the food which endures for eternal life.”

Please sign the visitor’s book at our Welcome Center in the narthex. If you’d like to know more about us or are considering becoming a member, please complete the form found in each pew, return it to an usher or simply put it in the collection plate. There is a cry room down the stairs off the narthex where the service can still be heard. Busy-bags, children’s bulletins and magazines and are also provided in the narthex.

We’d like for you to learn more about us!

A Reconciling in Christ Congregation: We welcome people of all sexual orientations, gender identities, and gender expressions; and we are committed to work for racial equity.



A Green Congregation: for being stewards of the earth.

In Covenant with Lutheran Campus Ministry (LuMin St. Louis), lcmstl.org

LAND AND PEOPLES ACKNOWLEDGEMENT

Bethel Lutheran Church acknowledges and honors the Tribal peoples, including the Osage Nation, Quapaw, Miami, Otoe-Missouria, Kickapoo, and Illinois Confederacy among others, who were unjustly removed from their ancestral homelands on which we gather.

Bethel Lutheran Church honors the Native peoples who have cared for, and continue to care for, the lands which they first inhabited, named, and tended.

Bethel Lutheran Church recognizes that the cultural and spiritual life of our Indigenous siblings offers wisdom about living in relationship with creation and with our neighbors.

In support of our goal of being a caring, inclusive, Christ-centered community, we

- ❖ care for God’s creation
- ❖ promote the non-violence of Christ and care for those who suffer
- ❖ participate in the Spirit toward a global religious community

The Prelude

Old French carols

Settings by César Franck (1822–1890)

Noël Angevin: *Quoi, ma voisine, es-tu fâchée*

(“Why, good neighbor, are you so excited?”)

Chant de la Creuse (Mary’s Cradle Song)

Vieux Noël: *Or nous-dîtes, Marie*

(Old carol : “Tell us, blessed Mary, of the Angel Gabriel”)

Noël Angevin (carol from Anjou)

These French “noëls” address a variety of themes from the Christmas story: the Annunciation, the angels’ appearance to the shepherds; and the humble circumstances of the Birth at Bethlehem. César Franck was born in Belgium, but lived, studied, and worked in Paris, and was the teacher of many great French organists. He is perhaps best known for his aria, *Panis Angelicus* – “Bread of Angels.”

Processional

It Came Upon the Midnight Clear

ELW # 282

CAROL

Melody by Richard Storrs Willis, 1850; words by Edmund Sears, 1846

Invitatory Prayer

Dear People of God: In this Christmas Season, let it be our duty and delight to hear once more the message of the Angels, to go to Bethlehem and see the Son of God lying in a manger.

Let us hear and heed in Holy Scripture the story of God's loving purpose from the time of our rebellion against him until the glorious redemption brought to us by his holy Child Jesus, and let us make this place glad with our carols of praise.

But first, let us pray for the needs of his whole world, for peace and justice on earth, for the unity and mission of the Church for which he died, and especially for his Church in our country and in this city.

And because he particularly loves them, let us remember in his name the poor and helpless, the cold, the hungry and the oppressed, the sick and those who mourn, the lonely and unloved, the aged and little children, as well as all those who do not know and love the Lord Jesus Christ.

Finally, let us remember before God his pure and lowly Mother, and that whole multitude which no one can number, whose hope was in the Word made flesh, and with whom, in Jesus, we are one for evermore.

Almighty God, you made this holy night shine with the brightness of the true Light. Grant that here on earth we may walk in the light of Jesus' presence and in the last day wake to the brightness of his glory; through your Son, Jesus Christ our Lord, who lives and reigns with you and the Holy Spirit, one God, now and forever.

Amen.

Carol

Angels from the Realms of Glory

ELW # 275

REGENT SQUARE

words by James Montgomery, melody by Henry Smart

First Lesson

Isaiah 9:2–7

Sit.

The people who walked in darkness have seen a great light.

Carol*O Little Town of Bethlehem*

ELW # 279

SAINT LOUIS

words by Phillips Brooks, melody by Lewis Redner

1. All 2 and 3. All, *in harmony*. 4. All

The Episcopal clergyman Phillips Brooks was an American patriot and an ardent opponent of slavery. Following the end of the Civil War in 1865, he made a journey to the Holy Land, where he attended Christmas midnight mass at Bethlehem's Church of the Nativity. Brooks reportedly witnessed shepherds tending their flocks in the nearby fields, much as their forebears had done centuries before. These experiences later inspired Brooks to compose his famous hymn. The tune of the carol, composed in 1868 by the organist, Lewis Redner, was aptly named *SAINT LOUIS*.

Second Lesson

Titus 2:11–14

The grace of God has appeared.

Carol*Go Tell It on the Mountain*

ELW # 290

GO TELL IT

African-American spiritual

Gospel Lesson

Luke 2:1–20

Saint Luke's remarkable account of the Holy Birth, the heavenly host, and the humble shepherds of Bethlehem.

Carol*Away in a Manger*

ELW # 277

Music of James R. Murray (1841–1905)

Words attributed to Martin Luther (1483–1546)

1. All 2. High voices, with Children 3. All

Christmas Message

Pastor Scott Benolkin

Hymn of the Day

Chorale: *From Heaven Above*

VOM HIMMEL HOCH

Words and music attributed to Martin Luther

[Prelude by Friedrich Wilhelm Zachau (1663–1712)]

1. All 2. High voices 3. Low voices
4. All 5. High voices 6. Low voices 7. All

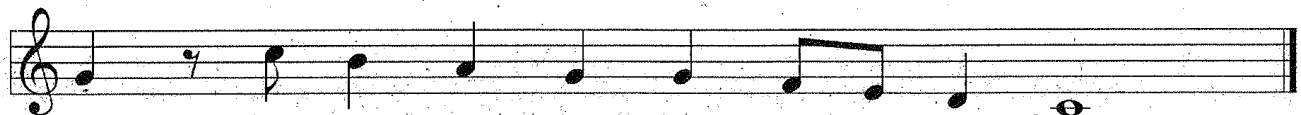
High voices = soprano/alto Low voices = tenor/bass



1 From heav'n a - bove to earth I come to bring good
2 To you this night is born a child of Mar - y,
3 This is the Christ, God's Son most high, who hears your
4 The bless - ing which the Fa - ther planned the Son holds



news to ev - 'ry - one! Glad tid - ings of great joy I
cho - sen vir - gin mild; this new - born child of low - ly
sad and bit - ter cry; he will him - self your Sav - ior
in his in - fant hand, that in his king - dom, bright and



bring to all the world, and glad - ly sing:
birth shall be the joy of all the earth.
be and from all sin will set you free.
fair, you may with us his glo - ry share.

Solo:

5. O dearest Jesus, holy child,
Prepare a bed, soft, undefiled
keeps;
A holy shrine, within my heart,
throng
That you and I need never part.

All:

6. My heart for very joy now leaps;
My voice no longer silence
I too must join the angel-
To sing with joy his cradle-song.

All:

7. "Glory to God in highest heav'n,
Who unto us his Son has giv'n."
With angels sing in pious mirth:
A glad new year to all the earth!

Prayers of Intercession

Filled with good news of great joy,
let us offer our prayers for the church, the earth, and all people.

After each portion of the prayers:

God of grace,
receive our prayer.

We commend these prayers to you, O God,
trusting your grace made known to all,
through the Word made flesh, Jesus Christ, our Savior and Lord.

Amen.

The Lord's Prayer

Offertory

Vieux Noël (old carol)
Setting by César Franck

Carol

Love Has Come
UN FLAMBEAU, JEANNETTE, ISABELLE
Traditional French carol, setting by Stephen Mager

ELW # 292

1. High voices 2. Low voices 2a. Instrumental interlude 3. All

High voices = soprano/alto

Low voices = tenor/bass

Blessing

Stand.

The Recessional

O Come, All Ye Faithful
ADESTE FIDELES
Setting by David Willcocks (1919–2015)

ELW # 283

The Postlude

Settings by César Franck
Noël Suisse: *Il est un petit l'ange*
(“’Twas a little angel”)

Sortie: *Quoi, ma voisine, es-tu fachée*
(“Why, good neighbor, are you so excited”)

Those wishing to listen to the postlude may be seated near the organ.

* * *

Organ music for this service is by Italian musicians, composed expressly for this Holy Night. Much of it was originally composed for orchestra, and is played this evening in transcription.

Many composers of the Baroque wrote concerti and symphonies on the subject of the Holy Birth, which typically contained, in some form, a *pastorale*, a kind of musical manger scene. This *pastorale* convention dates back to the late sixteenth and early seventeenth centuries. Such music was traditionally associated with shepherds, perhaps because, in many cultures, those humble keepers of sheep passed the time and soothed their flocks with the reedy sound of bagpipes. The *pastorale* was composed in a lilting rhythmic style, often to a sustained drone, in imitation of a bagpipe. For eighteenth century listeners, these elements suggested images of shepherds. *Pastor*, of course, means “shepherd.”

Cuetlaxochitl Donation Thanks



The beautiful Christmas plants gracing the chancel are given by:

Sunny Sholts
Kuhlmann Family in memory of Kevin Sebert and John Sebert
Tim Gutknecht
Brenda Bredemeier
Jessica White and family in memory of Lorraine Chase

SCHEDULE

bethelstl.org/events

TUE	12/24	Christmas Eve 5 PM Christmas Eve Lessons and Carols (no communion) 10 PM Christmas Eve Candlelight Eucharist Musical prelude at 10 PM, Holy Communion at 10:30 PM
WED	12/25	Christmas Day 10 AM Holy Communion
SUN	12/29	The First Sunday of Christmas 10 AM Holy Communion
SUN	1/5	Epiphany (observed) 10 AM Holy Communion 5 PM Bethel Youth Twelfth Night / Three Kings party



To make an offering electronically, go to bethelstl.org/give

*Have Something for the Bethel Connection, Bulletin, Website, Narthex Information Board, or Facebook?
Email it to submissions@bethelstl.org by 9 AM Monday morning.*

SERVING TODAY

Leader and Preacher
Lector
Musicians
Audio-Visual Engineer

Pastor Scott Benolkin
Malinda Walter
Stephen Mager, Organist and Music Director
Sherman Lee



7001 Forsyth Boulevard, Saint Louis, MO 63105
Office Hours Mon–Fri 10 AM–2 PM
Office: (314) 863-3112
Pastoral Emergencies: (614) 446-9693
LuMin Pastor: (314) 636-3202

The Rev. Scott K. Benolkin (he/him), Pastor, pastor.scott@bethelstl.org
Stephen Mager, DM, Organist and Music Director
The Rev. Tina Reyes (she/her/ella), Campus Pastor, LuMin St. Louis, pastor.luminstl@gmail.com
Anna Burkemper, Church Administrator, office@bethelstl.org

*Have a prayer request? Email it to prayers@bethelstl.org anytime.
Note that the information you send to this address will get shared with a number of people who will be praying for you as well as the Sunday Holy Communion bulletin.*

It Came upon the Midnight Clear



- 1 It came up - on the mid - night clear, that glo - rious song of old,
- 2 Still through the clo - ven skies they come with peace - ful wings un - furled,
- 3 And you, be - neath life's crush - ing load, whose forms are bend - ing low,
- 4 For lo! The days are has - t'ning on, by proph - ets seen of old,



from an - gels bend - ing near the earth to touch their harps of gold:
and still their heav'n - ly mu - sic floats o'er all the wea - ry world.
who toil a - long the climb - ing way with pain - ful steps and slow:
when with the ev - er - cir - cling years shall come the time fore - told,



“Peace on the earth, good will to all, from heav'n's all - gra - cious king.”
A - bove its sad and low - ly plains they bend on hov - 'ring wing,
look now, for glad and gold - en hours come swift - ly on the wing;
when peace shall o - ver all the earth its an - cient splen - dors fling,



The world in sol - emn still - ness lay to hear the an - gels sing.
and ev - er o'er its ba - bel sounds the bless - ed an - gels sing.
oh, rest be - side the wea - ry road and hear the an - gels sing!
and all the world give back the song which now the an - gels sing.

Text: Edmund H. Sears, 1810–1876

Music: CAROL, Richard S. Willis, 1819–1900

Angels, from the Realms of Glory



- 1 An - gels, from the realms of glo - ry, wing your flight o'er all the earth;
- 2 Shep-herds, in the fields a - bid - ing, watch - ing o'er your flocks by night,
- 3 Sa - ges, leave your con - tem - pla - tions, bright - er vi - sions beam a - far;
- 4 All cre - a - tion, join in prais - ing God, the Fa - ther, Spir - it, Son,



once you sang cre - a - tion's sto - ry, now pro - claim Mes - si - ah's birth:
God with us is now re - sid - ing, yon - der shines the in - fant light.
seek the great de - sire of na - tions, you have seen his na - tal star.
ev - er - more your voic - es rais - ing to the e - ter - nal Three in One.

Refrain



Come and wor - ship, come and wor - ship, wor - ship Christ, the new - born king.

O Little Town of Bethlehem



O lit - tle town of Beth - le - hem, how still we see thee lie!
For Christ is born of Mar - y, and, gath - ered all a - bove
How si - lent - ly, how si - lent - ly the won - drous gift is giv'n!
O ho - ly child of Beth - le - hem, de - scend to us, we pray;



A - bove thy deep and dream-less sleep the si - lent stars go by;
while mor - tals sleep, the an - gels keep their watch of won - d'ring love.
So God im - parts to hu - man hearts the bless - ings of his heav'n.
cast out our sin, and en - ter in, be born in us to - day.



yet in thy dark streets shin - eth the ev - er - last - ing light.
O morn - ing stars, to - geth - er pro - claim the ho - ly birth,
No ear may hear his com - ing; but, in this world of sin,
We hear the Christ - mas an - gels the great glad tid - ings tell;



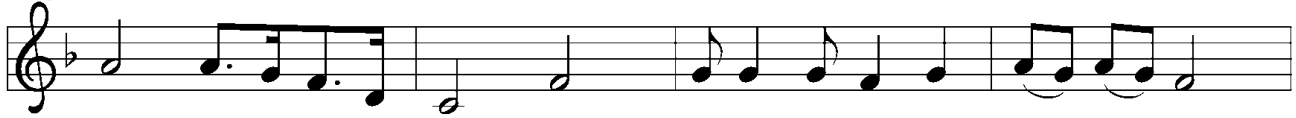
The hopes and fears of all the years are met in thee to - night.
and prais - es sing to God the king, and peace to all the earth!
where meek souls will re - ceive him, still the dear Christ en - ters in.
oh, come to us, a - bide with us, our Lord Im - man - u - el!

Text: Phillips Brooks, 1835–1893

Music: ST. LOUIS, Lewis H. Redner, 1831–1908

Go Tell It on the Mountain

Refrain



Go tell it on the moun - tain, o-ver the hills and ev - 'ry - where;



go tell it on the moun - tain that Je - sus Christ is born!



- 1 While shep-herds kept their watch-ing o'er si - lent flocks by night,
- 2 The shep-herds feared and trem-bled when, lo, a - bove the earth
- 3 Down in a lone - ly man - ger the hum-ble Christ was born;

Refrain



be - hold, through-out the heav-ens there shone a ho - ly light.
rang out the an - gel cho - rus that hailed our Sav - ior's birth.
and God sent us sal - va - tion that bless-ed Christ-mas morn.

Text: African American spiritual, refrain; John W. Work Jr., 1872–1925, stanzas, alt.
Music: GO TELL IT, African American spiritual

Away in a Manger



1 A - way in a man - ger, no crib for his bed, the lit - tle Lord
2 The cat - tle are low - ing; the ba - by a - wakes, but lit - tle Lord
3 Be near me, Lord Je - sus; I ask you to stay close by me for -



Je - sus laid down his sweet head; the stars in the bright sky looked
Je - sus, no cry - ing he makes. I love you, Lord Je - sus; look
ev - er and love me, I pray. Bless all the dear chil - dren in



down where he lay, the lit - tle Lord Je - sus a - sleep on the hay.
down from the sky and stay by my cra - dle till morn - ing is nigh.
your ten - der care and fit us for heav - en, to live with you there.

Text: North American, 19th cent.

Music: AWAY IN A MANGER, James R. Murray, 1841–1905

Love Has Come



1 Love has come— a light in the dark - ness! Love shines forth in the
2 Love is born! Come, share in the won - der. Love is God now a -
3 Love has come and nev - er will leave us! Love is life ev - er -



Beth - le - hem skies. See, all heav - en has come to pro - claim it;
sleep in the hay. See the glow in the eyes of his moth - er;
last - ing and free. Love is Je - sus with - in and a - mong us.



hear how their song of joy a - ris - es: Love! Love! Born un - to
what is the name her heart is say - ing? Love! Love! Love is the
Love is the peace our hearts are seek - ing. Love! Love! Love is the



you, a Sav - ior! Love! Love! Glo - ry to God on high.
name she whis - pers; Love! Love! Je - sus, Im - man - u - el.
gift of Christ - mas. Love! Love! Praise to you, God on high!

Text: Ken Bible, b. 1950

Music: UN FLAMBEAU, F. Seguin, *Recueil de Noël's composés en langue provençale*, 1856

Text © 1996 Integrity's Hosanna! Music (ASCAP), c/o Integrity Media, Inc., 1000 Cody Road, Mobile, AL 36695.

Duplication in any form prohibited without permission or valid license from copyright administrator.

O, Come, All Ye Faithful



1 O come, all ye faith - ful, joy - ful and tri - um - phant! O
 2 The high - est, most ho - ly, light of light e - ter - nal,
 3 Sing, choirs of an - gels, sing in ex - ul - ta - tion,
 4 Yea, Lord, we greet thee, born this hap - py morn - ing;



come ye, O come ye to Beth - le - hem;
 born of a vir - gin, a mor - tal he comes;
 sing, all ye cit - i - zens of heav - en a - bove!
 Je - sus, to thee be . . . glo - ry giv'n!



come and be - hold him, born the king of an - gels:
 Son of the Fa - ther now in flesh ap - pear - ing!
 Glo - ry to God . . . in . . . the . . . high - est:
 Word of the Fa - ther, now in flesh ap - pear - ing:

Refrain



Ve - ni - te a - do - re - mus, ve - ni - te a - do - re - mus,
 O come, let us a - dore him, O come, let us a - dore him,



ve - ni - te a - do - re - mus Do - mi - num.
 O come, let us a - dore him, Christ the Lord!